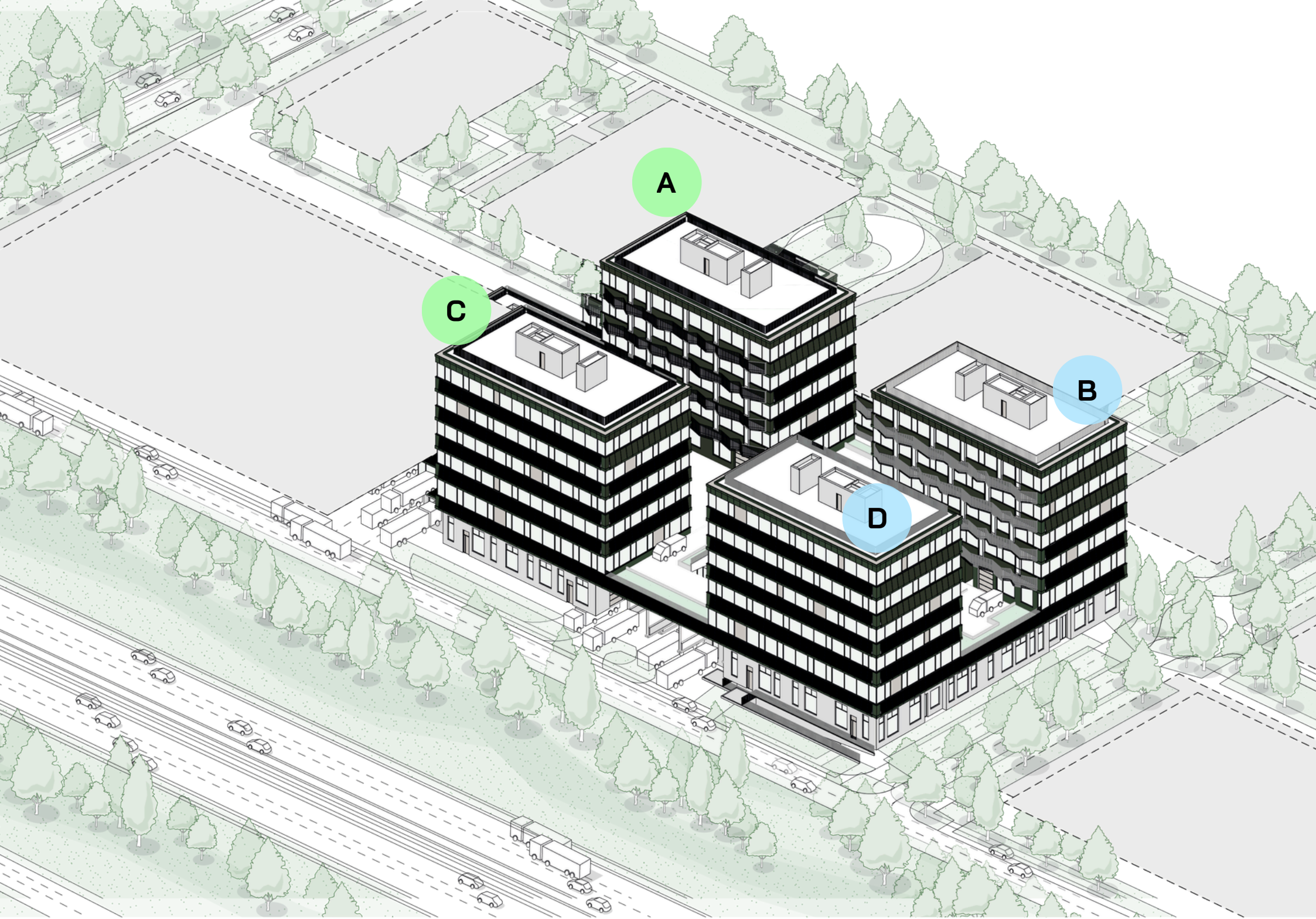




## Plan d'étages



maître de l'ouvrage

projet

libellé

n° affaire

phase

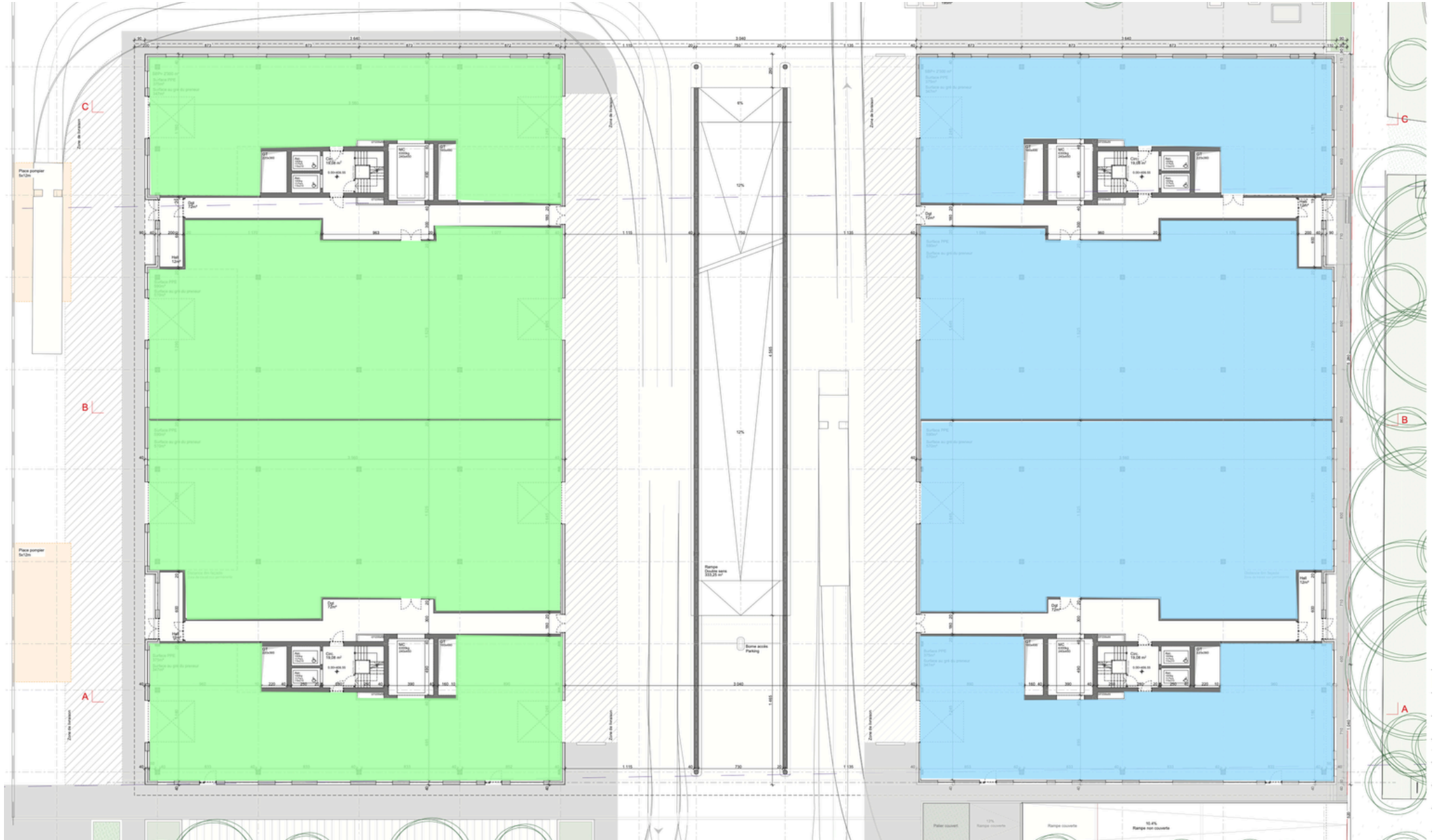
n° plan

est

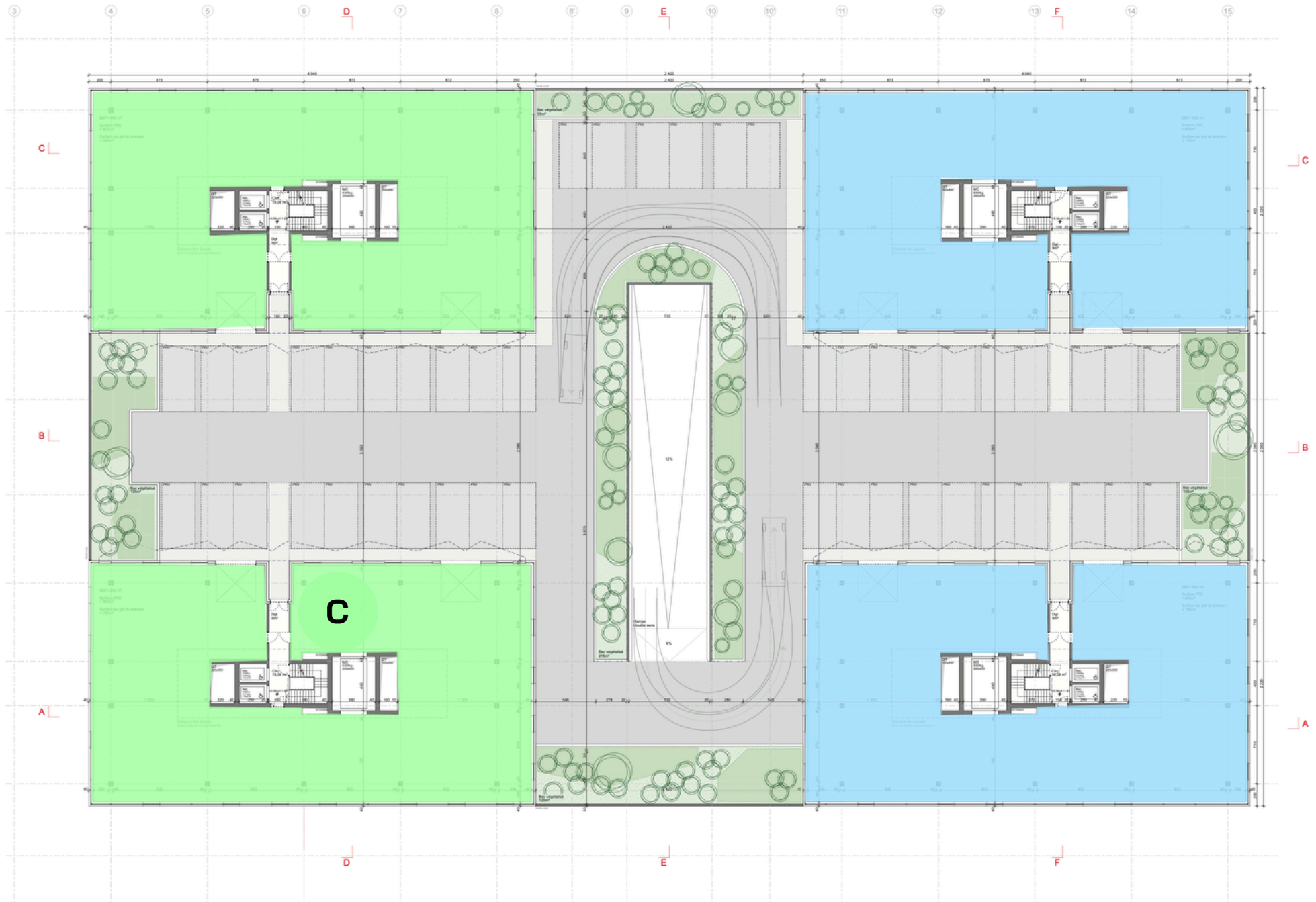
échelle

date

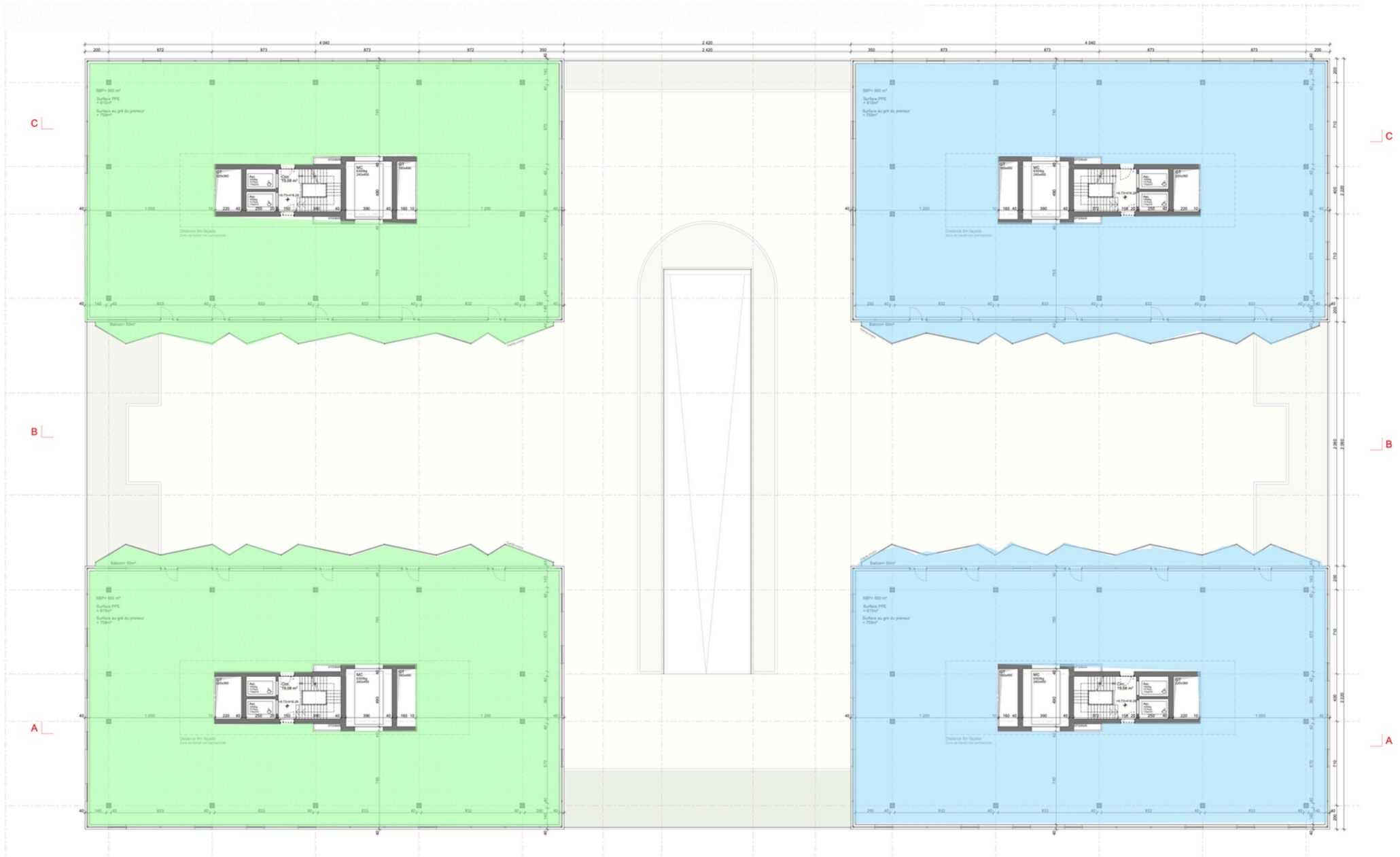
# Rez



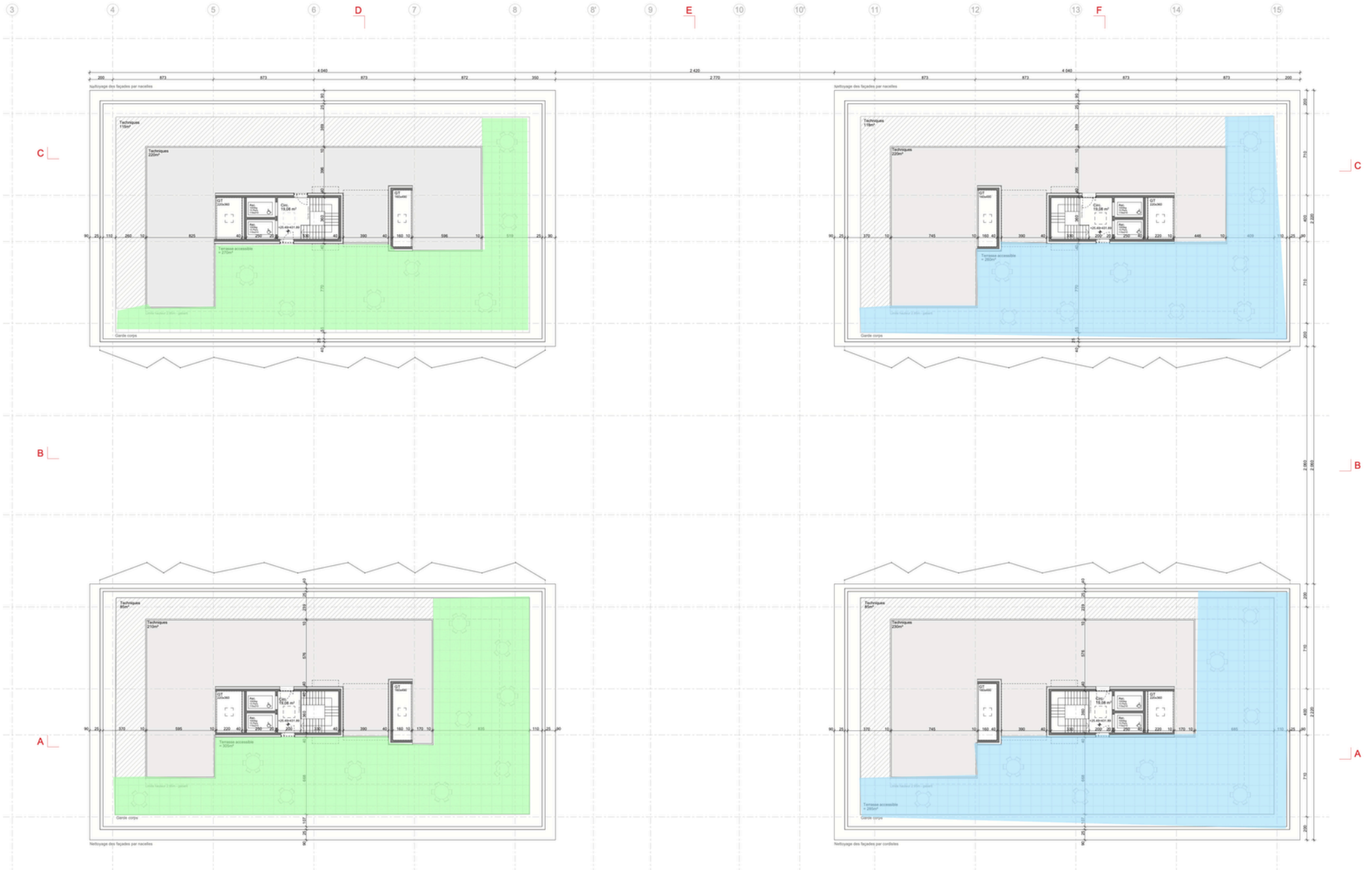
# Rez + 1



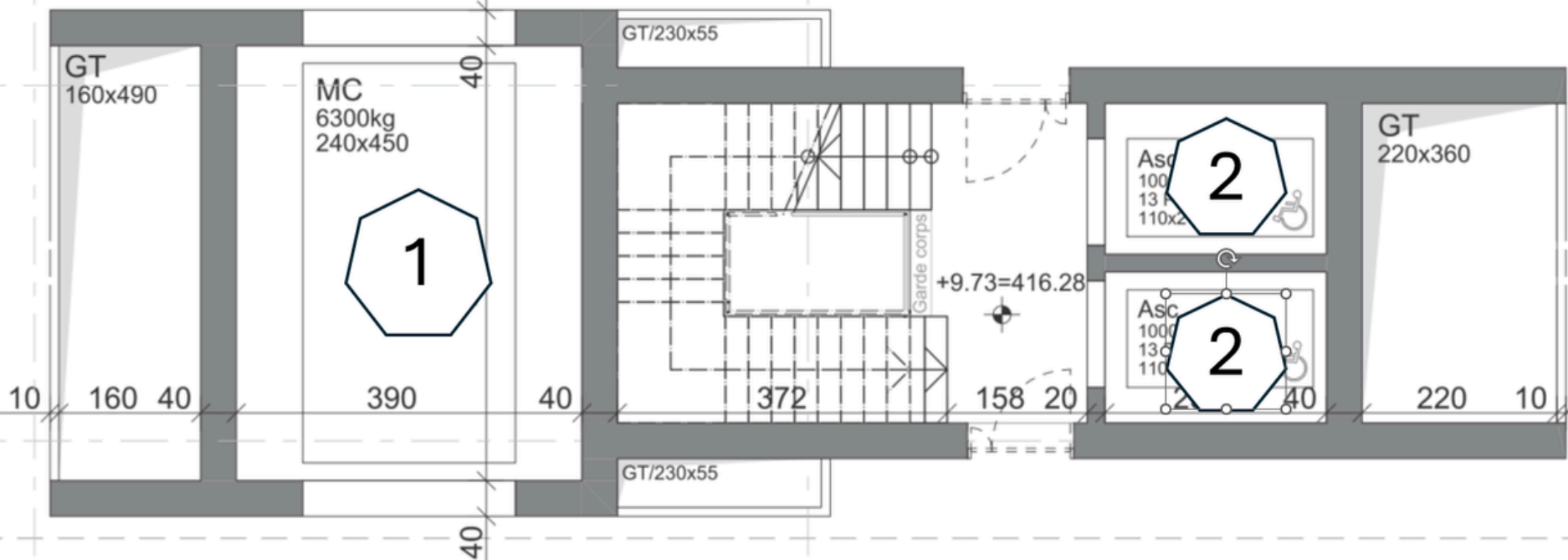
# R+2 à R+5



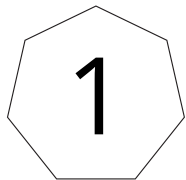
# R+6



# Noyau central



é  
nanente



## Monte-charge logistique

6.3 t

2.40 m x 4.45 m

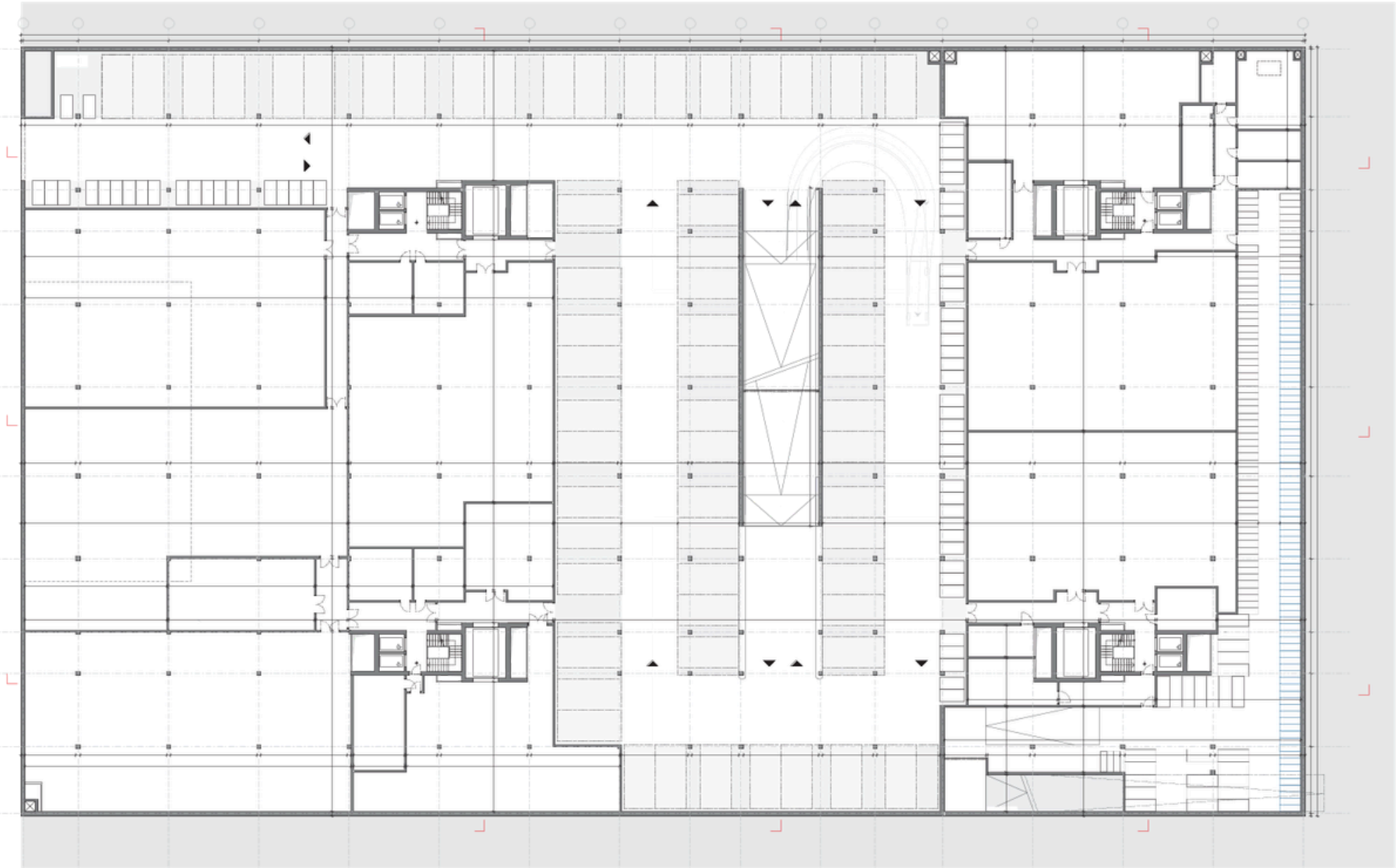


## Monte-charge/Ascenseur

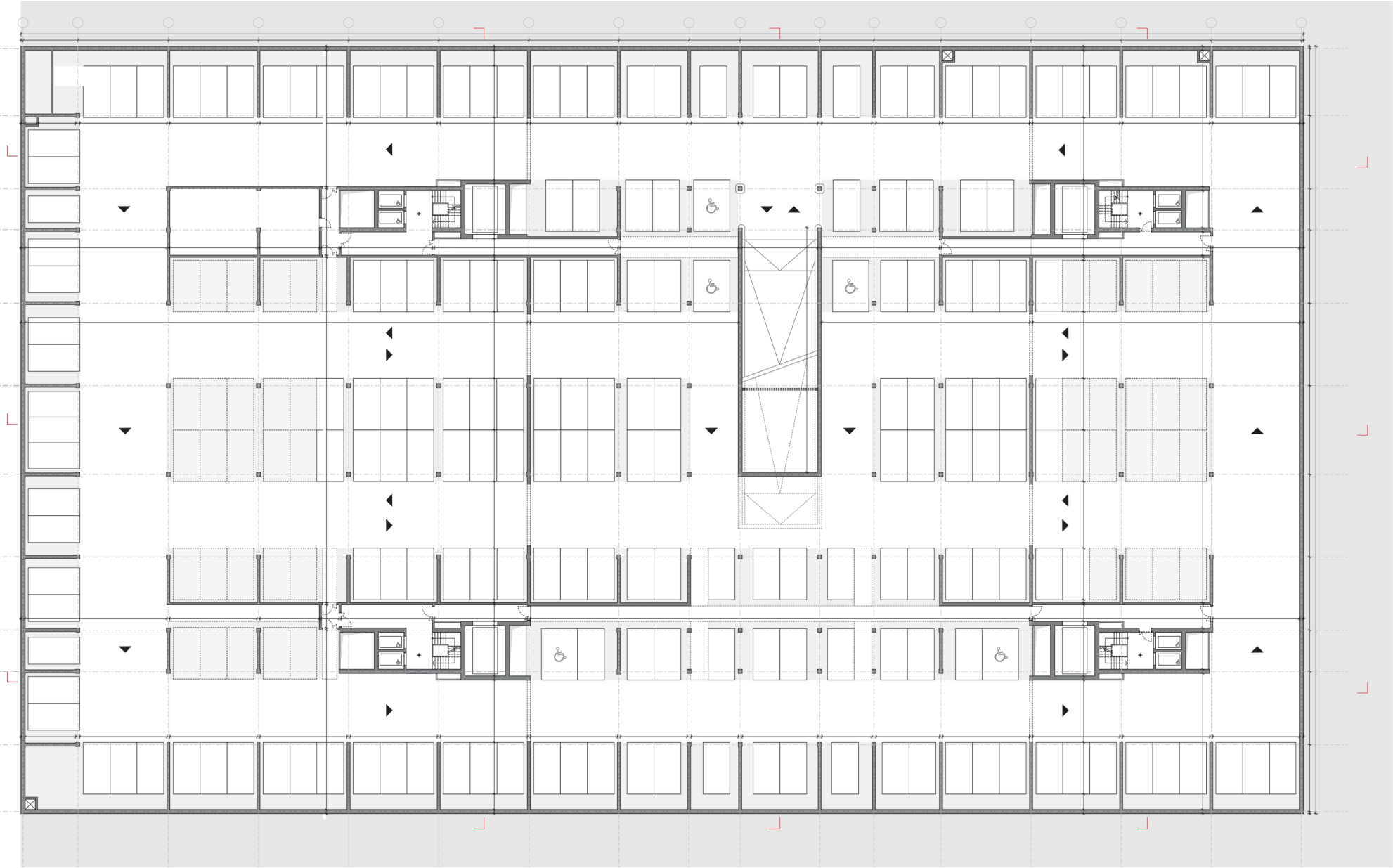
1.0 t

1.10 m x 2.1 m

# Sous-sol -1



# Sous-sol -2





# EVOLIS

ÉcoParc industriel des Cherpines



**deGIULI &  
PORTIER**  
architectes



**Océane Deguerque**

**[oceane.deguergue@uni5.ch](mailto:oceane.deguergue@uni5.ch)**

Courtière immobilière et Gérante d'Immeuble

+41 79 274 37 70

Uni5 Geneva

Rue de la Coulouvrenière 29 - 1204 Genève

+41 22 907 78 05

## BARNES | Commercial

**Ryan Klaus**

**[ryan.klaus@barnes-commercial.com](mailto:ryan.klaus@barnes-commercial.com)**

Spécialiste en Immobilier Industriel

+41 79 315 99 46

Barnes Commercial

Avenue de l'Étang 57 - 1211 Genève

+41 22 979 34 27